



Hoyland Common Primary School Prospectus





Hoyland Common Primary School “An outstanding school” OFSTED January 2008

Hoyland Common Primary School is a newly built, modern school with an attached Childrens Centre. We have over 340 full time pupils aged 4 to 11 years and a 26 place Nursery where children attend either mornings or afternoons.

The new school building has large play and sport areas, a field, two computer suites, a large library, outdoor classroom/decking area and all classrooms have Interactive whiteboards.

New admission arrangements are in place from September 2011; this policy and others can be found on the school website or are available in school.





OFSTED visited us in January 2008 and judged us to be "an outstanding school" where "pupils relish learning". The quality of teaching and learning was judged as "outstanding" and added that the "extremely high expectations for achievement and personal development help to ensure that they are prepared exceptionally well for their secondary school career" (to read the full report please visit our school website and click on the link).

We have also gained Quality Mark for the teaching of basic skills and Silver Artsmark award for our work in music and dance. Our pupils regularly represent the school in sports tournaments and have been both girls and boys Barnsley Schools Football Champions.



Parents of prospective pupils are welcome to visit the school; please ring our reception for an appointment. Also have a look at our school website!



Vision Statement

Developing confident, happy, self-motivated learners who enjoy learning and see it as a life long adventure

Aims for Pupils

Hoyland Common Primary School promotes high achievement and learning for life by working with children to:

- develop a caring attitude with high self esteem - respecting themselves, others and their environment
- develop enquiring minds and a spirit of curiosity
- achieve the highest standards possible in all areas of the curriculum regardless of age, sex, needs and ability
- be able to work independently and collaboratively
- develop values such as communication, commitment and relationships based on mutual respect





Mission for School

We believe that we can help each child to succeed:

- by aiming to achieve our school targets through being flexible and adaptable in the changing technological world
- by providing a broad and challenging curriculum
- by providing an enriching programme of extra-curricular activities, visits and events
- by providing a stimulating learning environment
- by offering a rich, varied and up to date range of learning resources
- through innovative teaching and an investigative approach to learning
- by providing an ethos of support, challenge and encouragement to succeed
- through learning partnerships between school, home, the local community and the wider world

We demonstrate our commitment to working as a learning community by:

- being an organisation which facilitates the learning of all its members and continually transforms itself
- promoting effective teamwork, with a balance between group decisions and decisive leadership towards common goals
- striving for continuous improvement in all that we do
- Hoyland Common Primary School being a learning centre of excellence for all, regardless of age, sex, creed, role/needs and ability





Hoyland Common Children's Centre offers a wide range of services to meet the requirements of our local community.

We have a core set of services that we deliver and these include:

- child and family health services, ranging from health visitors to breastfeeding support
- offering high quality childcare and early learning for ages 2 through to 5
- advice on parenting, local childcare options and access to specialist services for families, such as speech therapy, healthy eating advice or help with managing money
- help for you to find work or training opportunities, using links to local Jobcentre Plus offices and training providers

Hoyland Common Fun Club is a chargeable childcare facility which is offered to all children attending Hoyland Common Primary School and the wider community. All the Fun Club staff are qualified child carers.

The club is open between 7am and 9am and 3pm and 6pm in term time and 7am until 6pm daily in the school holidays.



“We provide a safe and welcoming place where we encourage happy, independent, confident children and families to be healthy in their daily adventures. A place where everyone can enjoy and achieve their goals in life”

Behaviour

Follow Our "Golden Rules"

- Golden Rules, Golden Rules
- The Hoyland Common Golden Rules
- Always try your very best
- To make you stand out from the rest
- Care for each other and our school
- Don't be a bully, don't be a fool
- Lying's not the thing to do
- Join the Hoyland Truthful Crew
- Do work hard, don't waste time
- If you listen, you'll have a good time

These rules were decided by the children themselves in discussion with the staff, and form the basis of the positive and respectful atmosphere that we promote within the school.

Behaviour within the school is based on mutual respect by, and towards, staff and children and it is the responsibility of everyone - not just the teachers - within the school. It is our intention to provide a relaxed and friendly atmosphere in which order and high standards of behaviour contribute to the smooth running of the school, and the happiness of everyone within it. Parents, teachers and other adults with whom the children come into contact all have a part to play.

However, the most important people are the parents, whose role in encouraging good behaviour is vital if the teachers are to be able to teach the children effectively. Hoyland Common Primary School acknowledges the key role parents have in ensuring that a consistently good example is set to their own children.



Special Educational Needs

In order to fulfil our responsibility to provide a broad and balanced curriculum for all pupils, staff at Hoyland Common Primary School aim to give every pupil the opportunity to experience success in learning and to achieve their maximum potential through a flexible, personalised programme. When planning, all staff have high expectations and provide opportunities for all pupils to achieve their full potential. Staff at Hoyland Common Primary School value pupils of different abilities and support inclusion. Within the school, staff and pupils will be constantly involved in the best ways to support all pupils' needs.

Within each class, teaching and learning styles and organisation will be flexible to ensure effective learning. Grouping to support children with Special Educational Needs as well as children who are underachieving will be part of this process.

We are committed to meeting the needs of children who experience barriers to their learning, which may relate to inherent difficulties (such as sensory or physical impairment), or may relate to factors in their environment, including the learning environment they experience in school and/or at home. Our dedicated Vulnerable Pupils' Team and Learning Mentor work with a variety of external agencies to provide a network of support to pupils and their families. The school SEN policy outlines our provision and support in full.





Residential Visits

Our programme of residential visits gives children as young as Year 3 the opportunity to spend time away from home and school in a new environment, and to participate in adventurous activities in a safe and controlled way. We find that these visits have a dramatic effect on a child's maturity and sense of self-esteem, as well as building previously-unknown talents. School staff are always on site 24 hours a day. Centres we have visited recently include Thornbridge, Bakewell and Kingswood, Staffordshire.

Our Extra-Curricular Activities and Sports

The school runs several successful clubs and activities at lunchtimes and after school. These include choir, drama, netball, football, rugby and cricket clubs. The clubs are operated by the staff, professional coaches or by Barnsley's Performing Arts and Drama Service. We have recently used coaches from Rugby League clubs, and Yorkshire County Cricket Club. The clubs are opened up to as many children as possible, within certain limits owing to the number of adults present and the suitability of the activity for different age groups. The school produces many talented performers in the arts and sport, and these activities and successes are given a high profile within the school and the wider community.

Talking to you

The school keeps parents informed of the child's progress through annual school reports, two target sheets and two parents evenings (in the Autumn and Spring terms). There are parents' meetings to discuss transition and SATS tests, and there may be additional communication in certain other circumstances.

We also produce, with the children, a school newspaper, The Globetrotter, which aims to keep parents and the community informed and entertained.

The school website is updated regularly
www.hoylandcommonprimary.uk.org





What parents say:

"Hoyland Common School has a very friendly and welcoming atmosphere"

"It's a very caring, forward thinking and modern school"

"Hoyland Common School is a very happy, safe school. We are extremely pleased with our child's progress"

What the children say:

"I am really proud to be part of HCPS"

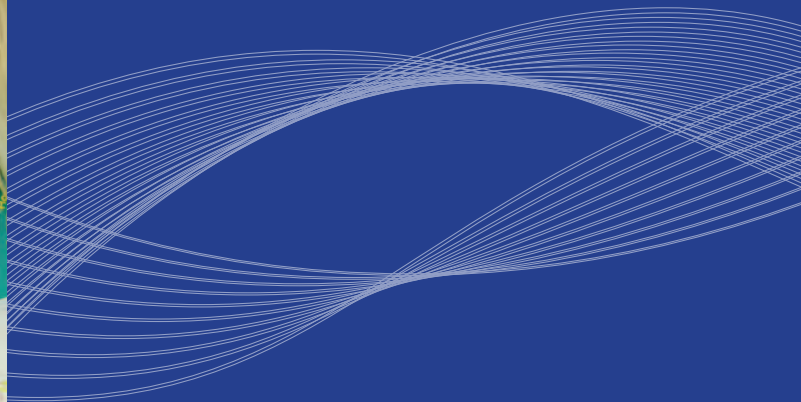
Tom Helm - Year 6

"The teachers and staff listen to you and make things fun"

Lucy Whitmore - Year 5

"You can choose to go to lots of after school clubs"

Elise Shepherd - Year 4





"Developing happy, positive, self-motivated pupils, who enjoy learning and see it as a life-long adventure."



Hoyland Common Primary School, Sheffield Road, Hoyland Common, Barnsley S74 0DJ

Tel: 01226 369640 Fax: 01226 741025

Acting Co-Headteachers: Mr T Banham and Mrs S Harrison

Chair of Governors: Mrs J Wilson

Website: www.hoylandcommonprimary.uk.org